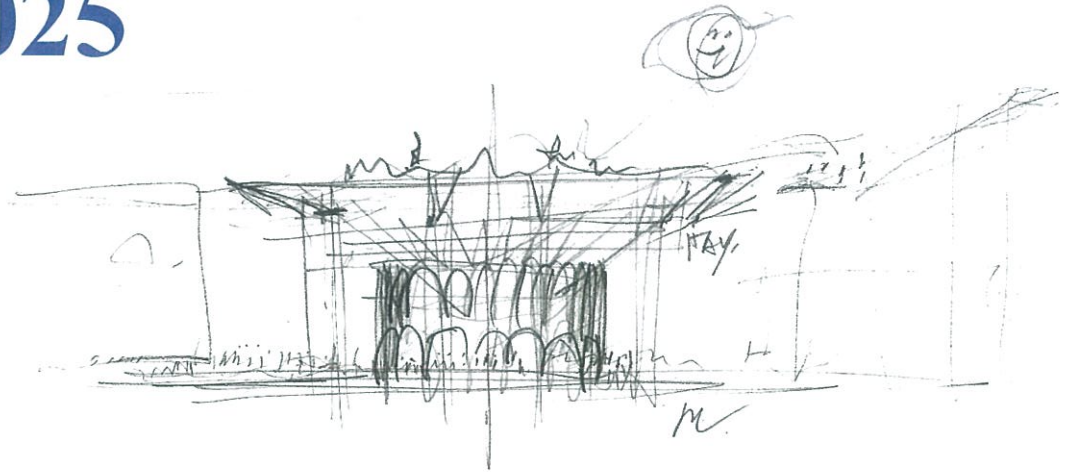


Padiglione Italia Expo Osaka 2025

Pavement, Ceiling and Walls Report

26 Settembre, 2023



mario
cucinella
architects



OFFICIAL PARTICIPANT

Cliente: General Commissioner for the Italian participation to
Expo 2025 Osaka

Design Lead: Mario Cucinella Architects
via F. Flora 6, 40129 Bologna Italia
via C. Poma 52, 20129 Milano Italia

Index

All the options presented in this report refer to the pdf document:

" 0123_P_Materials Sheet"

1.0 Pavement Table Sheet

- 1.1 Plan - Level 00
- 1.2 Plan - Level 01
- 1.3 Plan - Level 02
- 1.4 Plan - Rooftop
- 1.5 Material Sheet

2.0 Ceiling Table Sheet

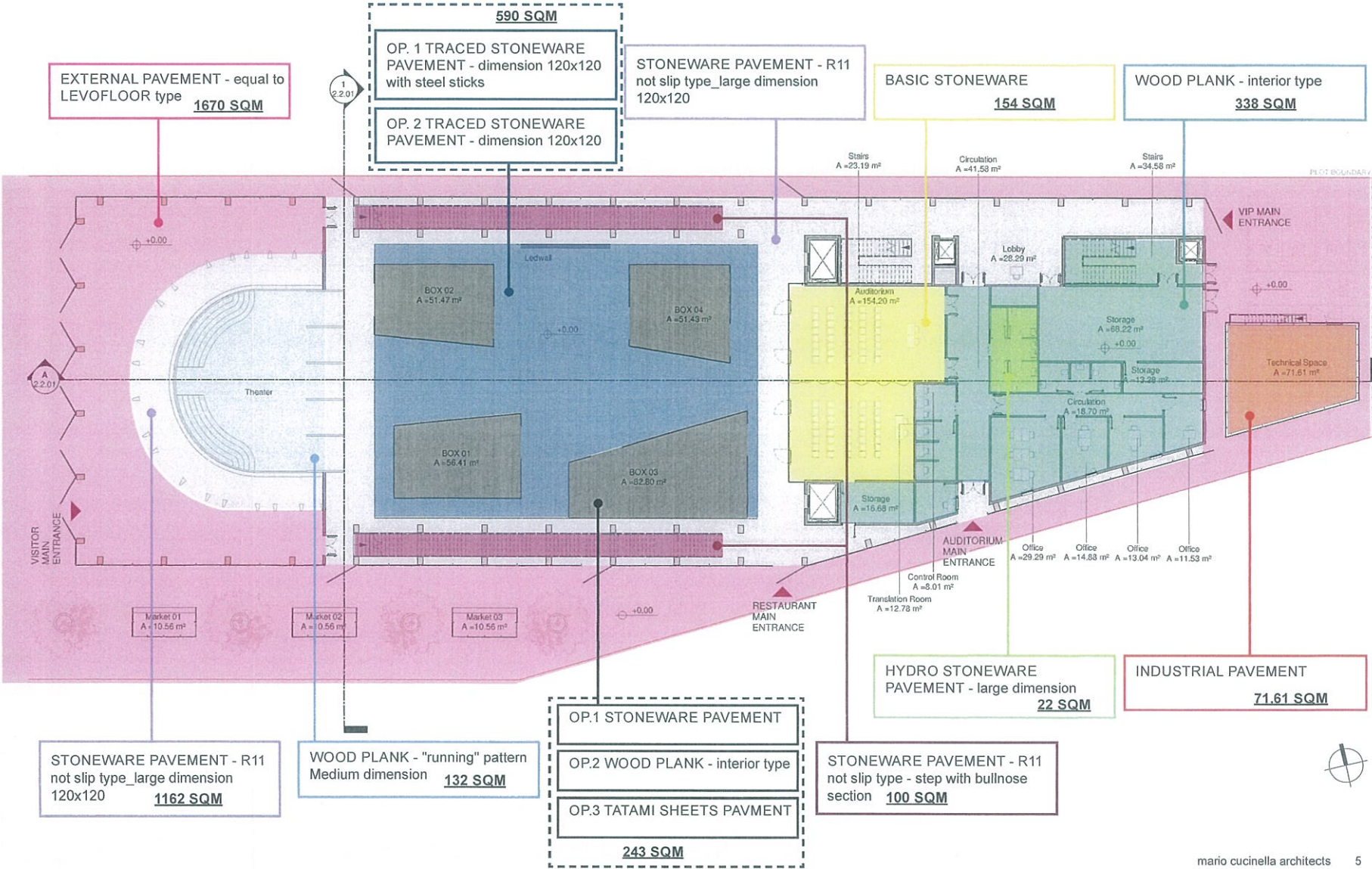
- 2.1 Plan - Level 00
- 2.2 Plan - Level 01
- 2.3 Plan - Level 02
- 2.4 Plan - Rooftop
- 2.5 Material Sheet

3.0 Walls Table Sheet

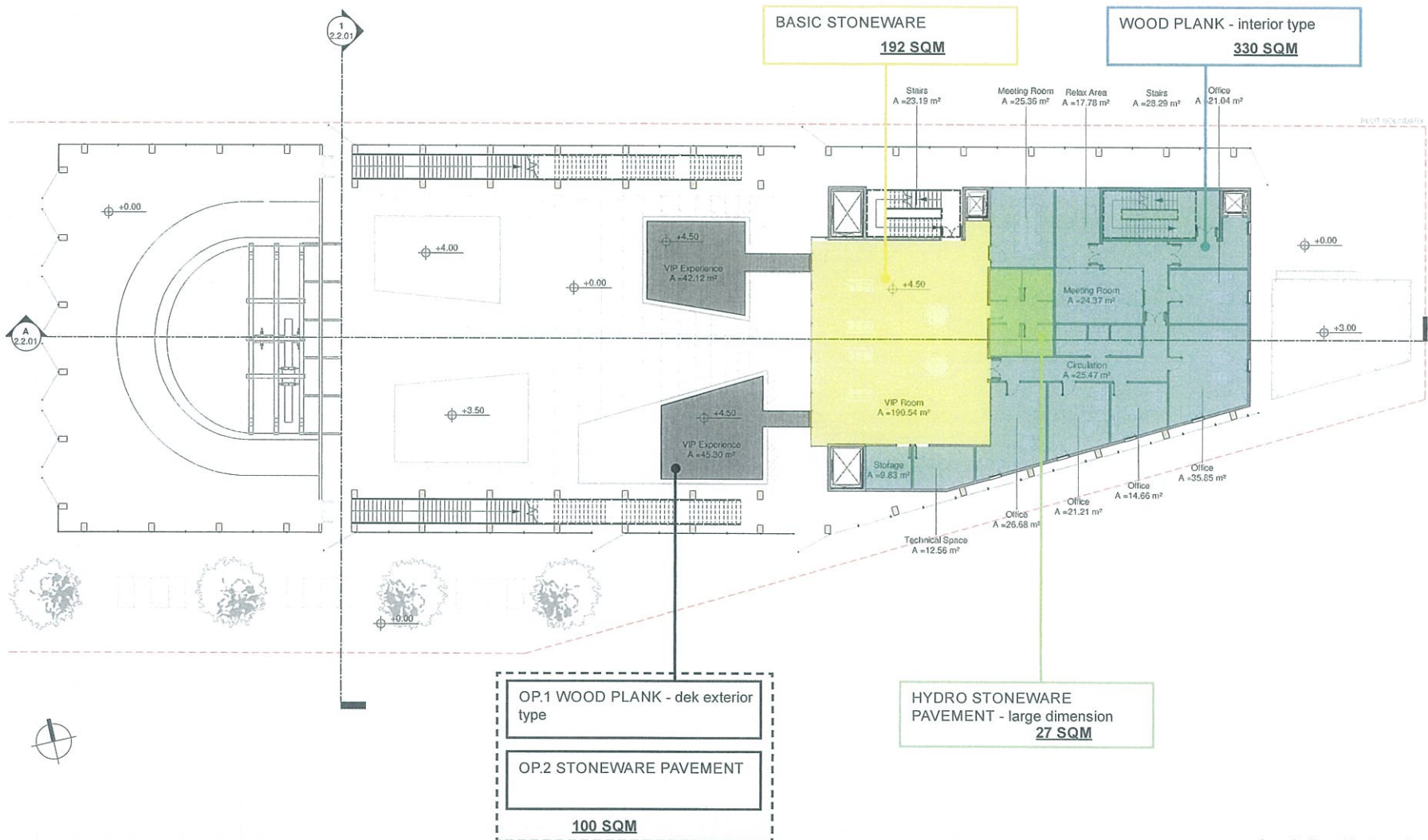
- 3.1 Plan - Level 00
- 3.2 Plan - Level 01
- 3.3 Plan - Level 02
- 3.4 References

1.0 Pavement table sheet

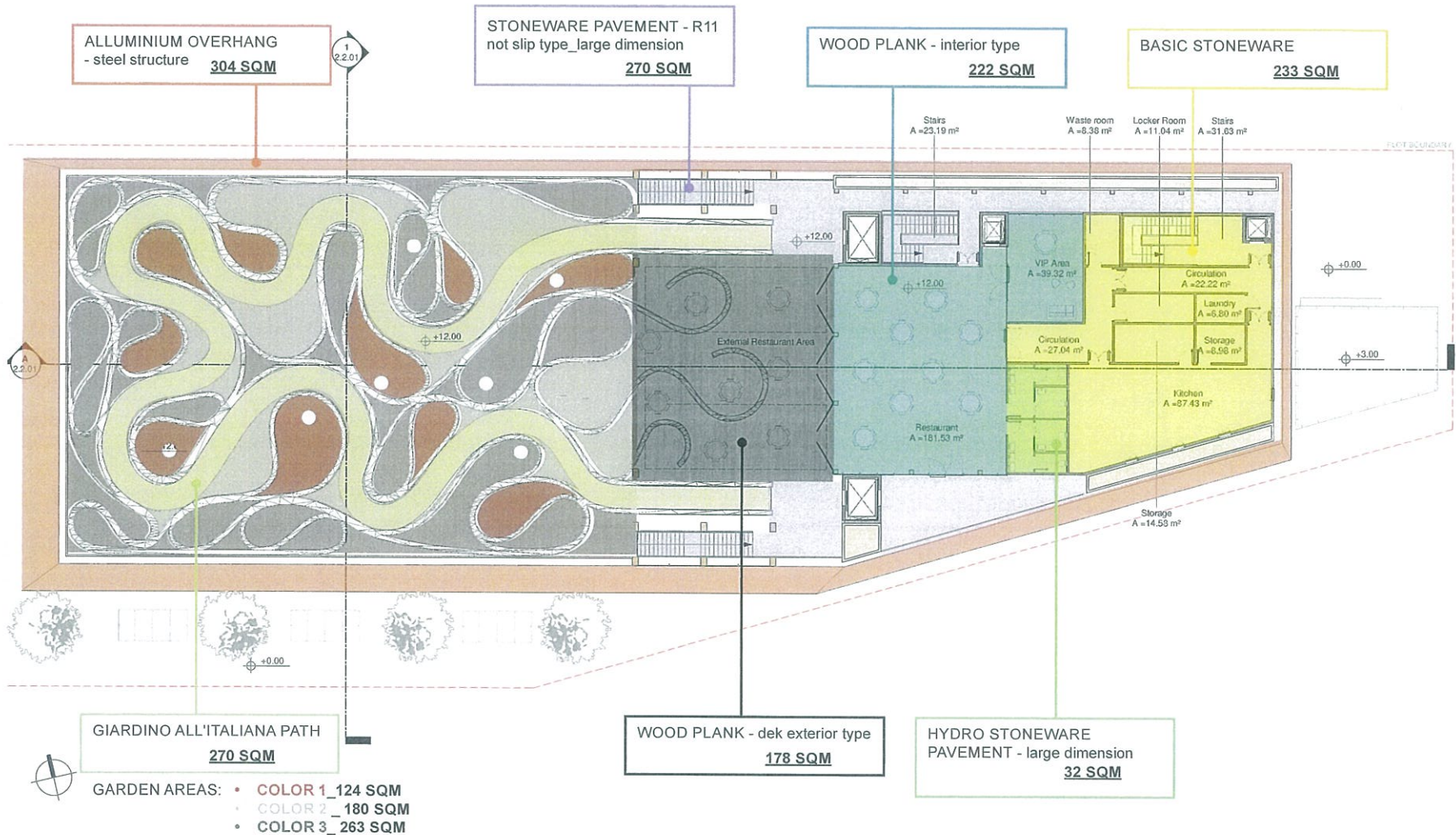
1.1 Plans - Level 00



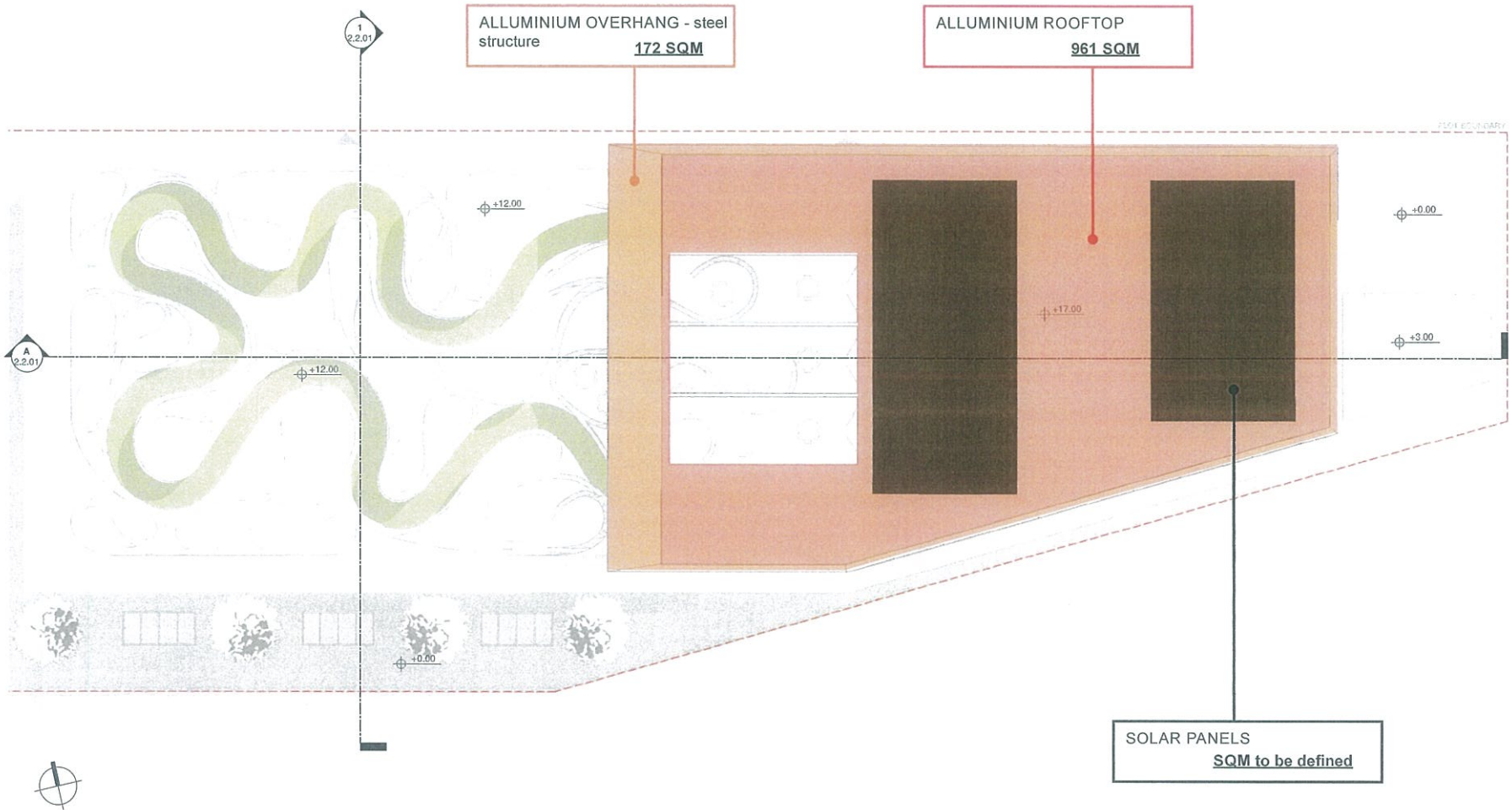
1.2 Plans - Level 01



1.3 Plans - Level 02

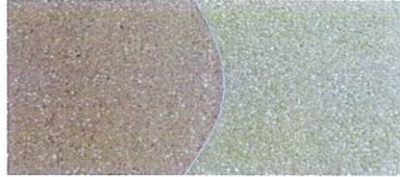


1.4 Plans - Rooftop



1.5 Material Sheet

EXTERNAL PAVEMENT - equal to LEVOFLOOR type



TRACED STONEWARE PAVEMENT - dimension 120x120 with steel sticks



STONEWARE PAVEMENT - R11 not slip type_large dimension 120x120



WOOD PLANK - "running" pattern Medium dimension



WOOD PLANK - interior type



TATAMI SHEETS PAVEMENT



THE ENTIRE SYSTEM SHALL BE COMPLIANT WITH LOCAL FIRE, ACUSTIC AND TERMICAL REGULATION.

BASIC STONEWARE



HYDRO STONEWARE PAVEMENT - large dimension



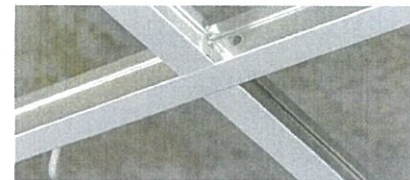
STONEWARE PAVEMENT - R11 not slip type - step with bullnose section



INDUSTRIAL PAVEMENT



ALLUMINIUM OVERHANG - steel structure

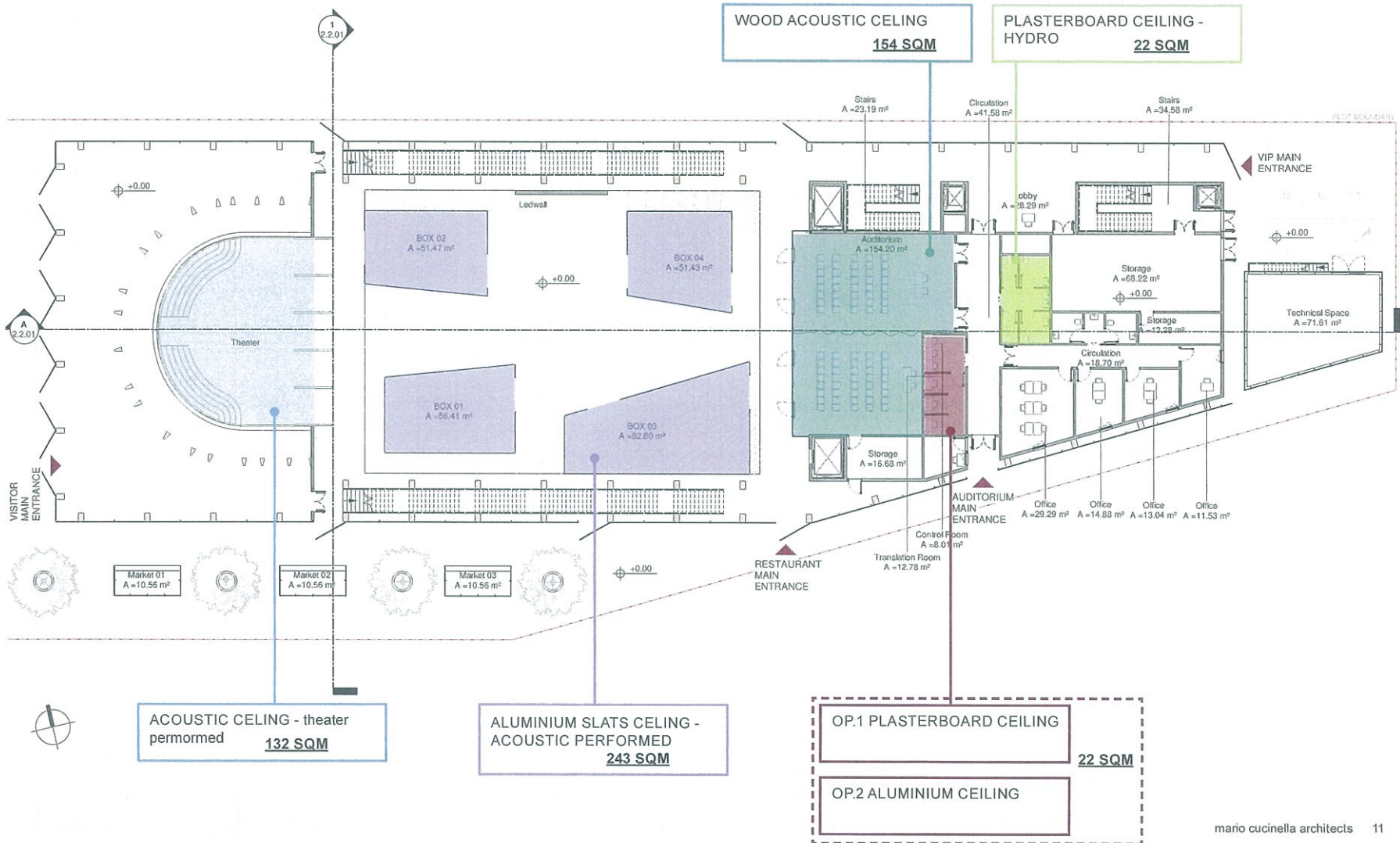


ALLUMINIUM ROOFTOP

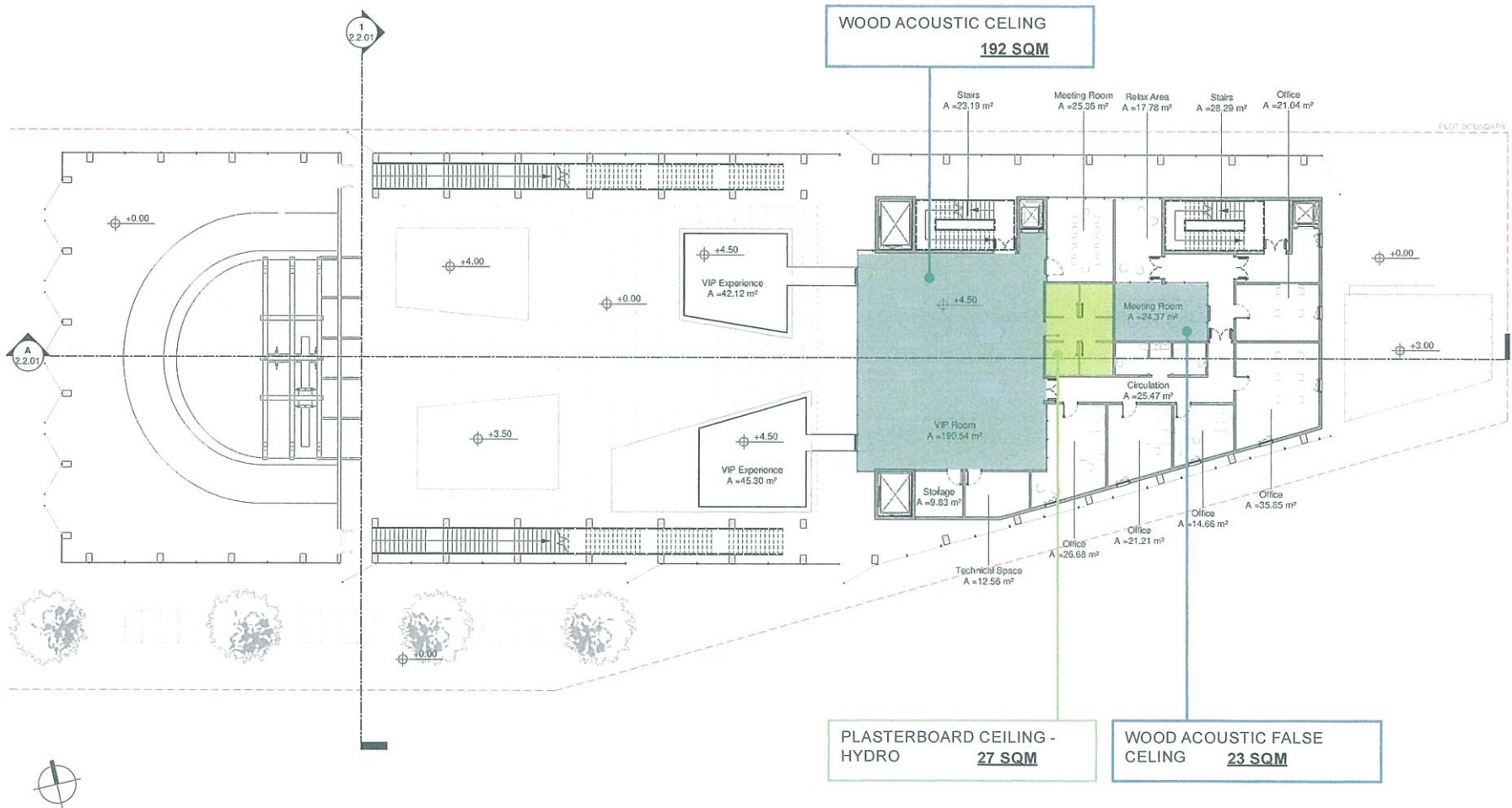


2.0 Ceiling table sheet

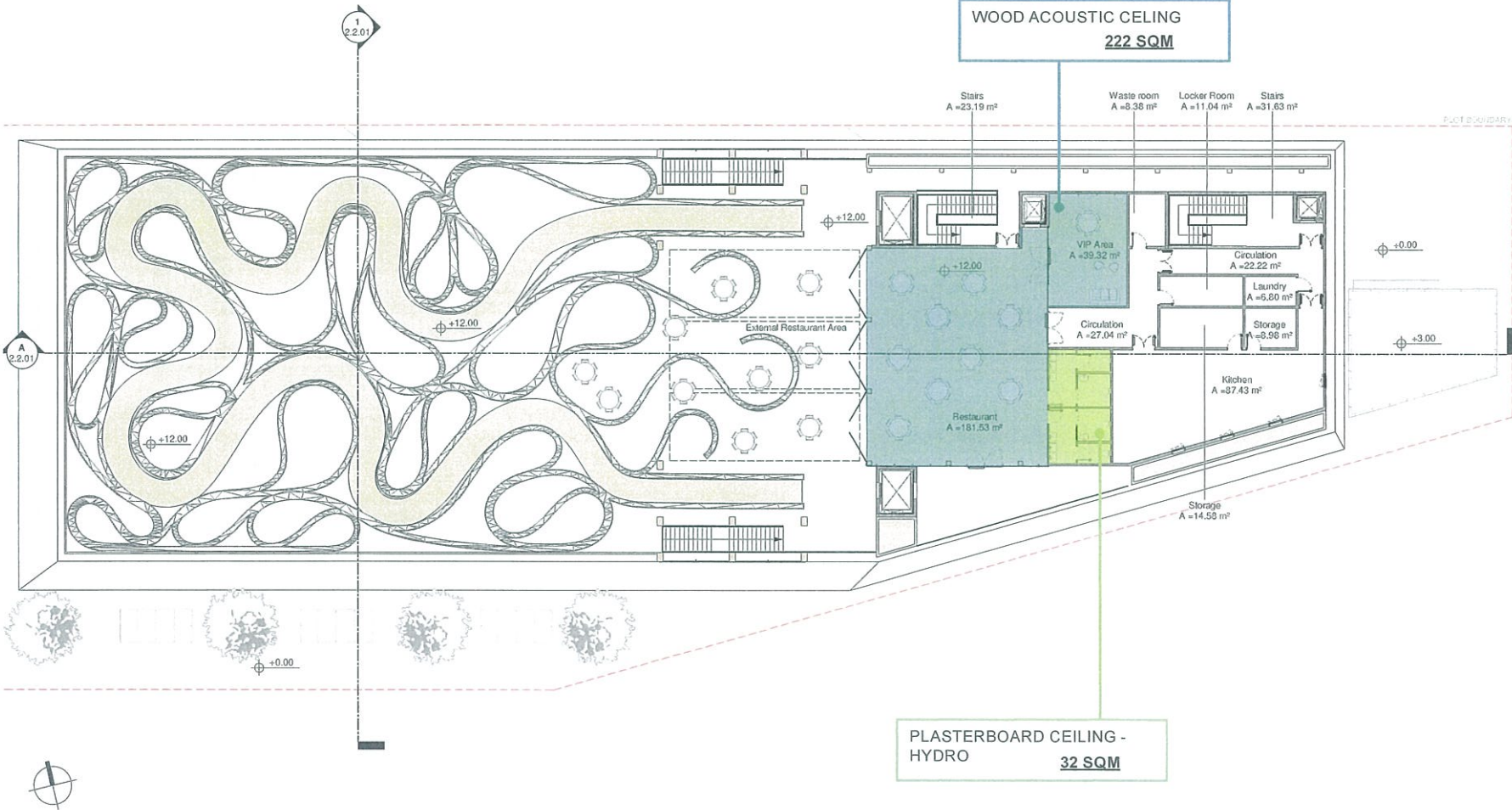
2.1 Plans - Level 00



2.2 Plans - Level 01



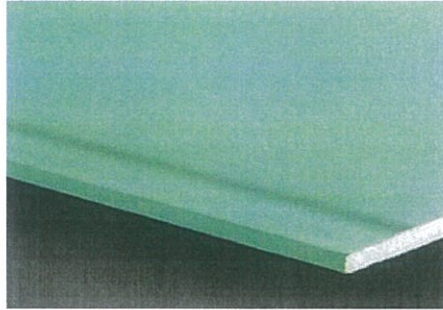
2.3 Plans - Level 02



1.5 Material Sheet

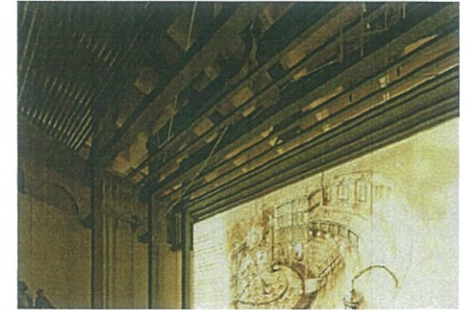
THE ENTIRE SYSTEM SHALL BE COMPLIANT WITH LOCAL FIRE, ACUSTIC AND TERMICHAL REGULATION.

PLASTERBOARD CEILING -
HYDRO



ACOUSTIC CELING - theater
performed

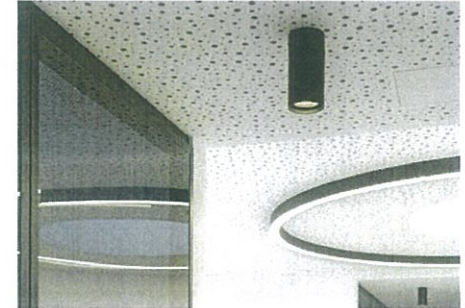
(Refers to scenography project)



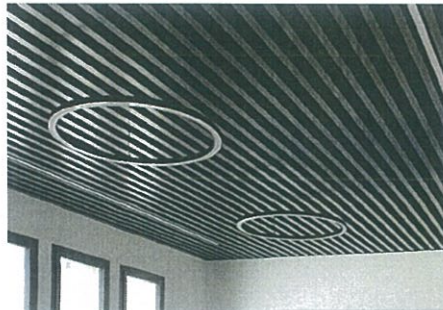
WOOD ACOUSTIC CELING



PLASTERBOARD CEILING



ALUMINIUM SLATS CELING -
ACOUSTIC PERFORMED



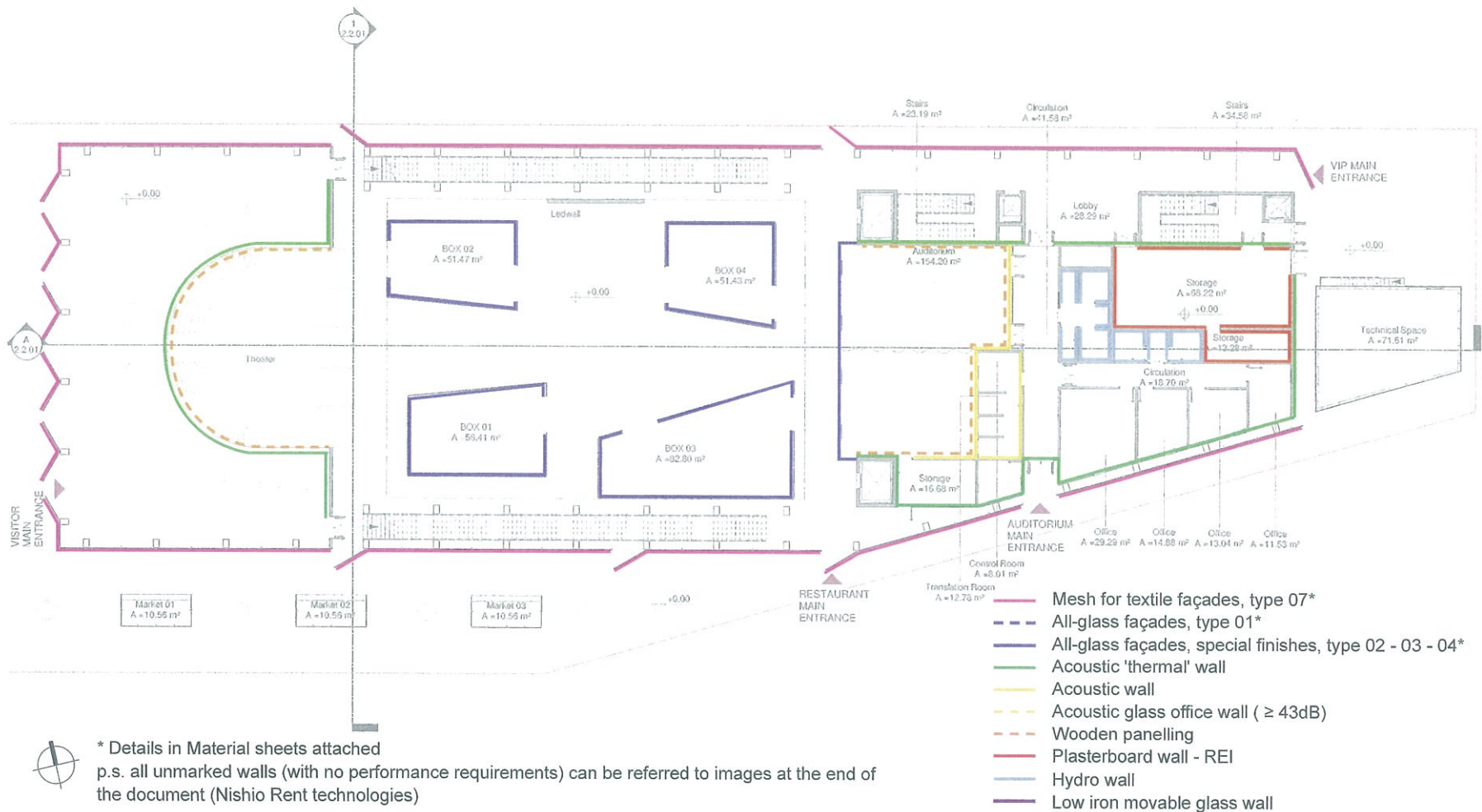
ALUMINIUM CEILING



3.0 Walls table sheet

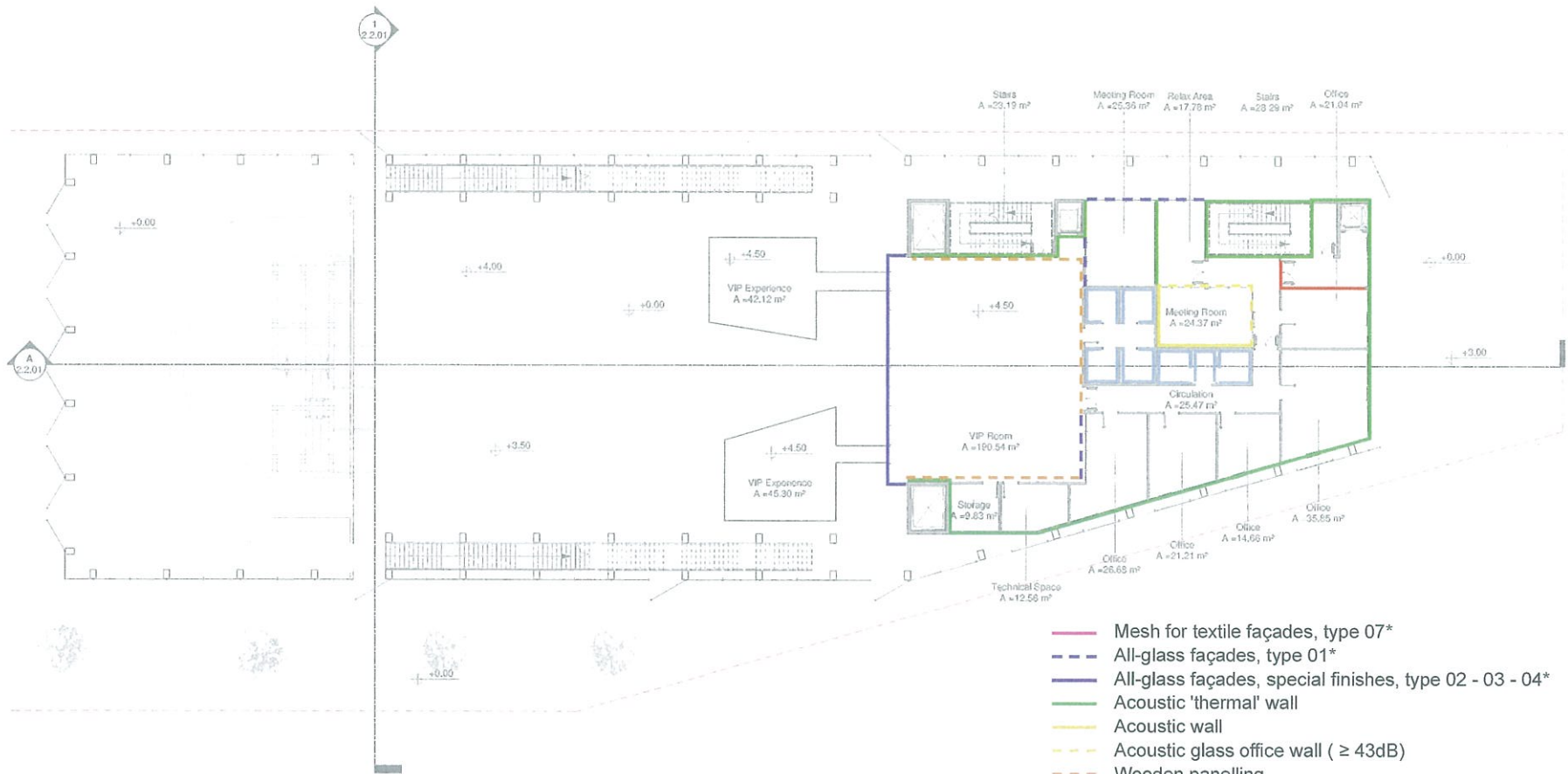
3.1 Plans - Level 00

THE ENTIRE SYSTEM SHALL BE COMPLIANT WITH LOCAL FIRE, ACUSTIC AND TERMICAL REGULATION.



3.2 Plans - Level 01

THE ENTIRE SYSTEM SHALL BE COMPLIANT WITH LOCAL FIRE, ACUSTIC AND TERMICHAL REGULATION.

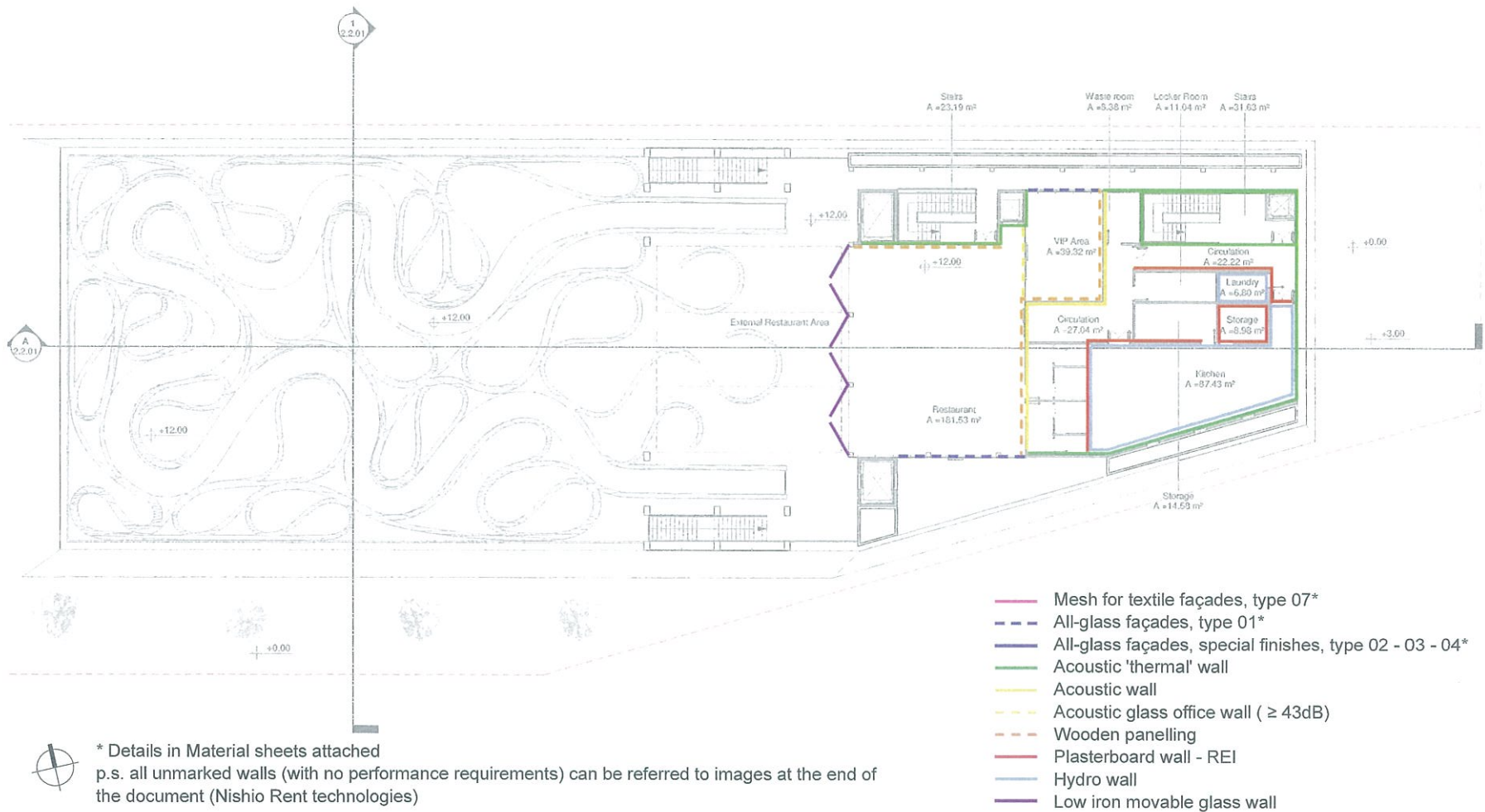


- Mesh for textile façades, type 07*
- - - All-glass façades, type 01*
- All-glass façades, special finishes, type 02 - 03 - 04*
- Acoustic 'thermal' wall
- Acoustic wall
- - - Acoustic glass office wall (≥ 43dB)
- - - Wooden panelling
- Plasterboard wall - REI
- Hydro wall
- Low iron movable glass wall

* Details in Material sheets attached
 p.s. all unmarked walls (with no performance requirements) can be referred to images at the end of the document (Nishio Rent technologies)

3.3 Plans - Level 02

THE ENTIRE SYSTEM SHALL BE COMPLIANT WITH LOCAL FIRE, ACUSTIC AND TERMICHAL REGULATION.

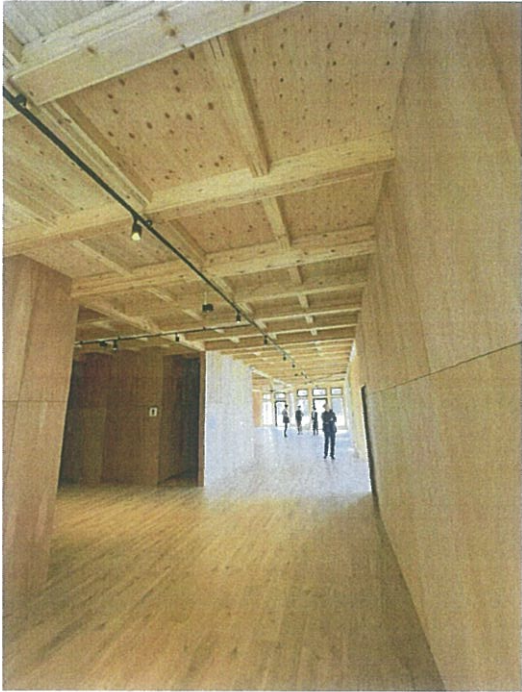


* Details in Material sheets attached p.s. all unmarked walls (with no performance requirements) can be referred to images at the end of the document (Nishio Rent technologies)

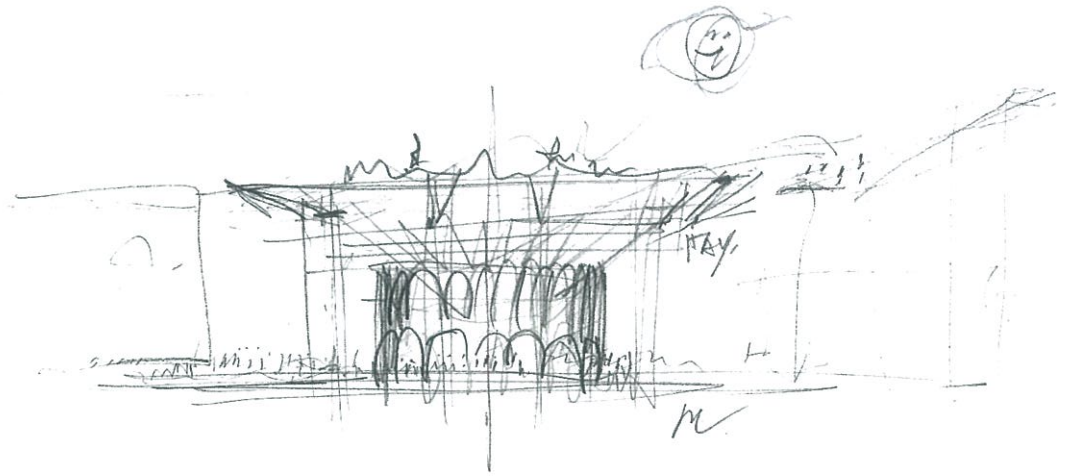
3.4 References

THE ENTIRE SYSTEM SHALL BE COMPLIANT WITH LOCAL FIRE, ACUSTIC AND TERMICAL REGULATION.

all unmarked walls (with no performance requirements) can be referred to images below (Nishio Rent technologies)



mca



mario
cucinella
architects



OFFICIAL PARTICIPANT